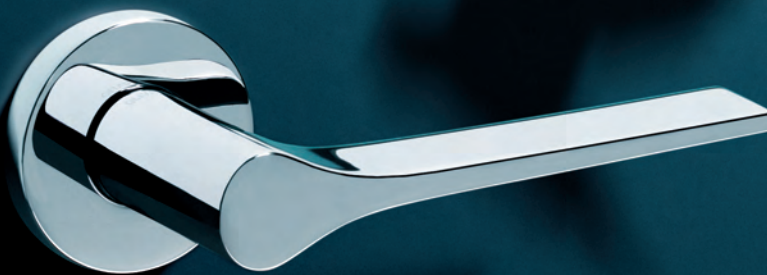


# Architectural Door Hardware

Olivari by Bellevue...Taking Design by the Hand



*Melopsittacus Undulatus*



Lama  
Design: Gio Ponti 1954



**OLIVARI**   
Design, taken by the hand



*Agapornis Roseicollis*

*Trend, designed by Studio Olivari, one of the door handles that Olivari has been entirely producing in Italy for over 100 years.*

## Product Index

Page	Door Handles		
		19	M111 - Tizianella E
		9	M207 - Total
11	M216 - Adamant	10	M228 - Trend - <b>New</b>
23	M116 - Agata	26	M108 - Uovo
13	M215 - Ala	24	M187 - Wind
16	M150 - Alexandra		
12	M225 - Arc - <b>New</b>		
20	M174 - Aster	27	Door Knobs
18	M185 - Aurelia		
21	M164 - Aurora	27	P150 - Alexandra
17	M208 - Beijing	27	P174 - Aster
15	M221 - Beta - <b>New</b>	27	P163 - Bond
8	M204 - Bios	27	P146 - Edison
8	M213 - Blade	27	P206 - Diana
26	M178 - Blindo	27	P200 - Link
23	M163 - Bond	27	P123 - Oscar
24	M103 - Bolzano	27	P195 - Planet Q
26	M125 - Chiara	27	P195 - Planet
26	M114 - Clinica 140	27	P120 - Roger
21	M181 - Club	27	P186 - Sector
21	M183 - Comet	27	P129 - Victor
12	M218 - Denver		
8	M206 - Diana	28	Entry & Sliding Door Pulls
9	M212 - Edge		
22	M167 - Emilia	33	Snibs & Releases
10	M229 - Euclide Q - <b>New</b>		
17	M229 - Euclide - <b>New</b>	34	Back Plates & Escutcheons
13	M217 - Fin		
21	M159 - Flaminia	35	Door Stops
24	M179 - Fly		
20	M172 - Futura	36	Privacy Flush Pulls
25	M166 - Gardena		
19	M105 - Garda	37	Flush Pulls
20	M227 - Globe - <b>New</b>		
22	M160 - Golia	38	Magnetic latch Range
25	M168 - Icaro		
9	M223 - Ice Cube - <b>New</b>		
13	M107 - Lama		
14	M176 - Laser		
12	M211 - Lesmo		
15	M200 - Link		
9	M222 - Living - <b>New</b>		
15	M197 - Logo		
22	M231 - Lucy - <b>New</b>		
14	M196 - Madison		
8	M205 - Minerva		
18	M226 - Moon - <b>New</b>		
13	M234 - Nina - <b>New</b>		
18	M173 - Nirvana		
23	M165 - Novella		
24	M175 - Onda		
25	M170 - Orvieto		
22	M189 - Perla		
11	M195 - Planet Q		
16	M195 - Planet		
23	M152 - Polo		
19	M128 - Raffaella		
18	M186 - Sector		
15	M194 - Selene		
19	M130 - Serenella - <b>New</b>		
17	M154 - Sibilla		
25	M169 - Siena		
12	M214 - Sky		
10	M193 - Space Q		
14	M193 - Space		
17	M190 - Stilo		
20	M182 - Tecno		
10	M192 - Time Q		
14	M192 - Time		

For as long as we can remember we have been striving to create, design and build. Our conscious effort to better ourselves; willingness to take risks has separated us from the rest.

*"We look, we touch, we consider and we are inspired"*

Since 1911 the Olivari Family of Italy has also been inspired... Inspired to design, create, build and inspire others.

For over 100 years the brand Olivari has represented nothing but the best in architecturally inspired door hardware and accessories. The relationship between design and form, form and function, aesthetics and practicality are all symbiotic.

The creation of a door handle is more than the door handle itself; it's the connection provided between its form and its function; its personality and its aesthetic appeal; its design and the environment. Quality & design are cultural; inspired by generations past.

The importance of the handle cannot be underestimated. It is an indispensable object; it can hinder one's advance or facilitate movement in spaces of everyday life. Without it, we would have to redefine our entire way of life.

Relevant is also the handle size. It is a small sculpture; a point of difference of visual attraction on surfaces that are all too often anonymous or redundant. The opening and closing of a door is a highly symbolic gesture which has not lost its meaning over time; taking design by the hand.

A key distinction of the Olivari name is the significant number of interpretations of the "design" concept. The modern handle lives somewhere in the middle of the equation, geometry and the organic, the practical and the inspired.

A handle's form is unique, a challenge to design and create. It represents personality and function in its truest form. Inspired designs, their materialization and transformation into Olivari handles is evident in the number of designs which exist in the Olivari range.

But just as important is their story of creation. A significant number of world renowned architects and designers have accepted Olivari's invitation to design the handle; to bring to life the balance between geometry and the organic.

*"Inspiration is true design.....embrace it"*



# SuperInox - A 30 year anti tarnish guarantee in sea air

Bellevue & Olivari of Italy are proud to introduce a new and totally revolutionary product finish called SuperInox. A SuperInox finished handle will not t-stain, tarnish, pitting or change colour - nor will its finish rub off.

It's **guaranteed for 30 years, even if directly exposed to sea air**. With the introduction of SuperInox, the strongest of salt air environments are no longer a problem.

## The Problem.

All too many times we see door hardware (including 316 marine grade stainless steel), commercial and domestic, whose finish is t-stained and tarnished or the handles surface has pitting marks - even the lustre of the handle starts to dissipate due to exposure to sea air. Environmental conditions such as salt air can corrode and even destroy a handle and its finish.

Not even 316 marine grade stainless steel can avoid these types of problems as its stainless not stain free.

Alternatively, frequent usage in a high traffic environment, such as commercial buildings, can often cause the finish of a door handle to rub off, typically showing the raw brass underneath in unsightly patches. With SuperInox, this is no longer a problem.

## Past Solutions.

Architects, Interior Designers and discerning consumers alike up until now have been limited to a small choice of products to overcome these types of issues.

These products typically don't offer a wide choice in their design or choice of finish and are often a simple stainless steel product or a product coated in PVD; not an ideal solution. Both of these options are all too familiar and limiting. They generally add nothing to the nature of the designed environment and often don't provide a long term cost effective solution.

## So what is SuperInox and why is it different ?

In technical terms, SuperInox consists of depositing metal composites with special features onto brass in a titrated alloy. Simplistically, the finish of the handle is specially treated by a process that coats the handle with a totally unique finish - that is considered to be **stronger** than 316 marine grade stainless steel.

The actual SuperInox finish is applied over the brass handle; it's important to

note that SuperInox finish is not PVD or a lacquer that can break down in time or when scratched. *It's a totally unique process that only Olivari can produce.*

The outcome of this process provides **greater durability and anti-tarnish strength well beyond that of stainless steel** with the flexibility in design of a brass based handle. Manufacturing techniques for brass based handles allow for superior quality and significant choice of design over steel based handles. The SuperInox technological cycle has been developed, perfected & patented by Olivari of Italy.

## Safeguarding Your Investment and Environment.

Creating an environment that's unique and special to the end user requires an investment in commitment, passion and creativity. Architects and Interior Designers alike are often let down by fittings that fail over time, even if they're called "designer" or "architectural fittings". Fixing or replacing these failed fittings can be costly in time, money & reputation. None of which was thought of or budgeted for and nor should it have been.

A SuperInox finished handle is ideal for all environments because it won't fail. It safeguards your design and monetary investment. Ideal for high traffic areas like front doors, bedroom doors as well as offices and hotels, and importantly coastal environments - all projects with direct sea air exposure.

## SuperInox Laboratory Tests verify the following performance:

- Resistance to saline fog: no corrosion after 3000 hours (ISO 9227, ASTM-B1 17, DIN 50021)
- Resistance to UV rays: no variation in colour tone (UNI 9897)
- Vickers hardness: HV 2.400 / 3000 (chromium: HV 800)
- Berkovitch hardness: GPa 25 28 (chromium: GPa 8) (according to the test effected by the C.N.R. in Padova)
- Prolonged contact: no surface alteration caused by ethyl alcohol, hydrogen peroxide, potassium nitrate thinner, ammonia, muriatic acid, silicone sealant, lime, cement, anti-lime products.
- Resistance to solvents: unlimited (according to the MEK test — methyl-ethyl-ketone).

*It won't tarnish, t-stain, fade, rub or pitting under any environmental circumstances. Your investment is guaranteed for the long term. 30 years from now, it will look and feel as good as the day you bought it. - SuperInox has arrived.*

SuperInox treated products require periodic cleaning with a damp non-abrasive cloth to remove lime or salt deposits that may build up over time.

All SuperInox products can be recognized by their indelible OLIVARI laser hallmark.

# BioChrome - The worlds 1st Bio-Friendly door handle finish

In 2005, Olivari's Research and Development Department developed a unique method for chrome-plating brass ecologically. Unlike the traditional manufacturing process, the BIOCHROME® covering uses trivalent chrome instead of the common hexavalent chrome, harmful to both health and the environment. Olivari of Italy & Bellevue are proud to introduce this new finish called BioChrome to the Australian and New Zealand markets, an environmentally friendly chrome finish for door hardware. It is truly a world innovation.

What is an environmentally friendly chrome finish on a door handle? Used in the manufacturing process of chrome plated products such as door handles, taps, cabinetware or any product that has a chrome plating is a chemical called Hexavalent Chrome. This chemical is highly pollutant, highly toxic and very damaging to the environment we live in.

A naturally occurring chrome, or environmentally friendly chrome, is called Trivalent Chrome. Trivalent Chrome does not have the damaging attributes that Hexavalent Chrome does; as a result the environment is far better off.

Prior to the enforcement of EU (European Union) regulations that enforce the limited use of Hexavalent Chrome, Olivari developed an environmentally friendly process, through which chromium-plated products are obtained. This process importantly addresses the following: the EU use of chromium regulations (introduced in late 2006), the heightened environmental awareness of public opinion and the market awareness of environmental design. BioChrome products are suitable for buildings certified for bio-architecture and for sustainable construction.

Olivari is the first door handle company in the world that has introduced Trivalent Chrome as an alternative to the use of Hexavalent Chrome on brass at an industrial level and that has made its related products available to all in the general hardware market.

Olivari of Italy is proud to be the first company in the world to be able to apply this type of technology to door hardware. Over time, our environment and the planet can benefit - as will generations to come.

BioChrome is available in 2 finishes; BioChrome Bright (otherwise known as polished chrome) and BioChrome Satin (otherwise known as satin chrome). The BioChrome finish has a darker tone of grey, more similar to steel compared to traditional chrome, which has a grey tone tending to blue.

This darker tone of grey is particularly interesting and attractive as it follows the new trends of architecture and interior design.

As responsible world citizens we should (and must) care about the future of the planet we live on. Often we ask, "What can I do to help?". Now we can all help. Today, we have a real opportunity to make a difference to the environment we live in. By selecting BioChrome based products, we can influence the manufacturing techniques used today, to help make a difference tomorrow.

BIOCHROME® is an exclusive Olivari finish that protects the environment.

Our BIOCHROME® finish is suitable for green architecture and anywhere a low environmental impact product is required.

Due to trivalent chrome being a thicker material than traditional Hexavalent Chrome, laboratory tests have shown that the greater thickness and uniformity of the BIOCHROME® plating over traditional chrome-plating guarantee great resistance to wear and tear and tarnishing making BioChrome not only good for the environment but also longer lasting.

Biochrome-plated products are recognizable because they have been laser hallmarked with the BIO logo.



# Low Rose

OLIVARI, always looking for innovative and elegant design, has developed a new line of components named **"LOW"**. This new line represents the latest trend in European door hardware. The rose on the door handle has been reduced from 10mm to 5mm in its projection, minimising the impact of the rose and consequently exalting the line of the handle.

For many years the European design industry has been asking for the rose of handles to be reduced in projection. Aesthetically, a thinner rose provides a smarter, cleaner sophisticated look than traditional sized roses.

To date, the problem has been how to reduce the protection without compromising the spring integrity within the rose. If the spring action fails, the handle will droop or not bounce back - a look that is less than ideal and deplored by all.

Olivari is proud to be the first to release a fully sprung 5mm low profile rose. Not only does this new low profile rose achieve the aesthetic look asked for by the design industry but it meets the engineering standards of modern levers by not compromising the return spring within the rose. Olivari's new 5mm **"LOW"** range of roses will bring the handle back to the horizontal every time, guaranteed.

The **"LOW"** components are patented models suitable for timber internal or external doors at least 40mm thick. Ideal for all passage latches and European style mortice locks.

Low Rose: 5mm



## Low rose, important details

Olivari's innovative low rose is only 5 mm thick, half that of the traditional thickness. The low rose is fully sprung ensuring handle bounce back.

It definitely looks better: The immobile parts stand out less and the handle's lines stand out more. Low rose hardware is fully patented by Olivari of Italy

Low rose hardware can only be used on doors 40mm thick or above and must be used with a 8mm solid spindle. It is suitable for all euro style mortis lock and all 8mm standard tube latches

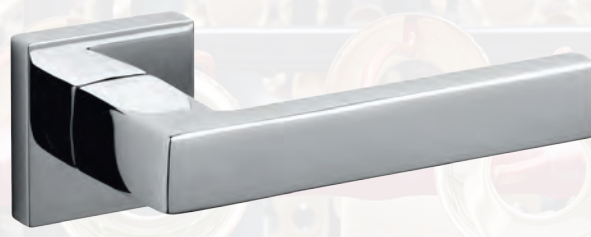
## Low rose hardware, products choice

- Round and square rose handle sets
- Round and square privacy snibs & eReleases
- Round and square cylinder escutcheons
- Round and square window back plate hardware

## Low rose Ordering process

To order any hardware on Low roses, the use of the letter **"L"** is required in the specification code, i.e. Tecno on round low rose in InoxSatin would be ordered as M182R1LIS vs. normal rose of M182R1IS. The use of the **"L"** is consistent with all Olivari relevant products

Standard Rose: 10mm



**Please Note:** Although some lever sets are shown on Low rose through this catalogue, the specification code shown are for normal rose. To order low rose version the letter **"L"** must be inserted into the lever set code before the letter **"R"** or **"S"** i.e. M195LS1

# Locks, Fire Sets & Back Plates

## Lock compatibility

Ideally suited for the Australian and New Zealand markets; Olivari lever sets are supplied on standard 10mm roses. These are 100% compatible and fully comply for use with Australian style mortice locks, European style mortice locks, as well as standard passage tube latches.

Each set of levers are supplied with 2 x 7.65mm split spindles (used for Australian style locks), and 1 x 8mm solid spindle (used for European style locks) as standard. Commercially rated bolt through fixings; otherwise known as tie-bolt fixings, are also supplied as standard within each box, making the Olivari range suitable for all projects from residential through to high-end commercial.

Olivari handles can be installed on doors ranging in thickness, from 25mm through to 45mm thick. For thicker doors, longer tie-bolt fixings and spindles can be ordered separately.

## Low rose

Olivari lever sets supplied on Low 5mm roses, are only suitable for use with European style mortice locks, and standard 8mm hubbed passage tube latches using the solid 8mm spindle supplied. All doors must be a minimum of 40mm thick. This combination makes the low rose ideal for all residential style projects.

## Fire Rating

Olivari's brass door handle range (excluding M207 Total and M150 Alexandra) on a standard 10mm rose, have been successfully tested over a four-hour period on fire door assemblies (as specified in AS1905.1-1990, AS1530.4.) making them ideal for all commercial projects.

These models are fully compatible with all fire rated lock sets and require no alteration or extra items. Both solid and split spindles are supplied as standard within the box-these spindles suit 7.65mm and 8mm lock and latch hubs.

## Plate & lock compatibility

Olivari lever sets are also supplied on back plates. These back plates are suitable for a wide range of door types such as timber doors, aluminium framed glass doors, and also steel or iron gates.

Plates available are suitable for use with Australian & European style locks. Back set distances range from 23, 25, 25.4, 45 through to 60mm and in some cases 128mm. For aluminium framed doors, (as a minimum) we recommend a 25.4mm back set; for timber doors a 45 or 60mm back set.

Plates can be supplied as handle only, blanks, with privacy turns, cylinder holes or any combination in a range of matching Olivari handle finishes. All plates supplied are independently sprung, ensuring superior handle bounce back.

*There are two types of plates available*

**Type one:** To suit timber type doors only

**Type two:** To suit timber type doors and Narrow framed aluminum doors

*See page 34 for images of the different plate types.*



## Designers



*Franco Albini, Sergio Asti, Shigheru Ban, Claudio Bellini, Rodolfo Bonetto, Andrea Branzi, Luigi Caccia Dominioni, Luca Casini, Joe Colombo, Rodolfo Dordoni, Ignazio Gardella, Giorgetto Giugiaro, Franca Helg, Steven Holl, Massimo Iosa Ghini, James Irvine*



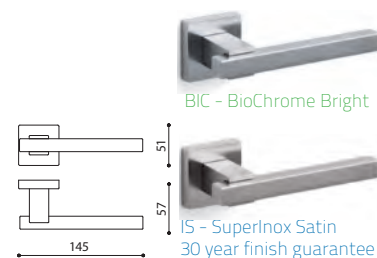
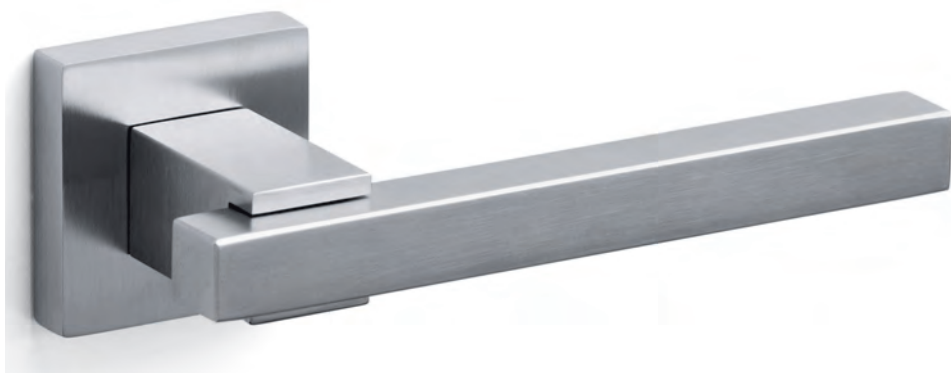


*Toyo Ito, Daniel Libeskind, Piero Lissoni, Vico Magistretti, Enrico Marforio, Enzo Mari, Peter Marino, Alessandro Mendini, Nicola Novelletto, Dominique Perrault, Gio Ponti, F.A. Porsche, Paolo Portoghesi, Richard Sapper, Patricia Urquiola, Roberto Volonterio*

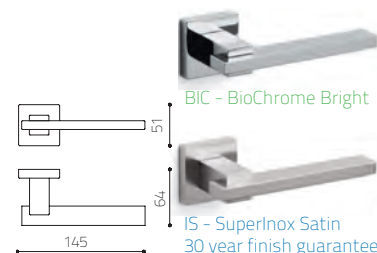


Square - square rose, square lever

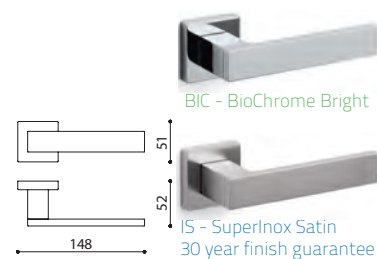
**Bios** - M204S1  
Studio Olivari 2006



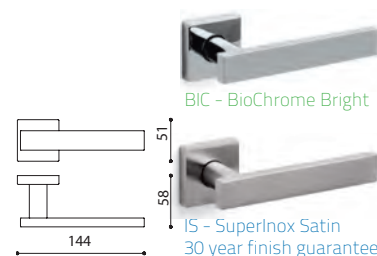
**Minerva** - M205S1  
Franco Sargiani 2006



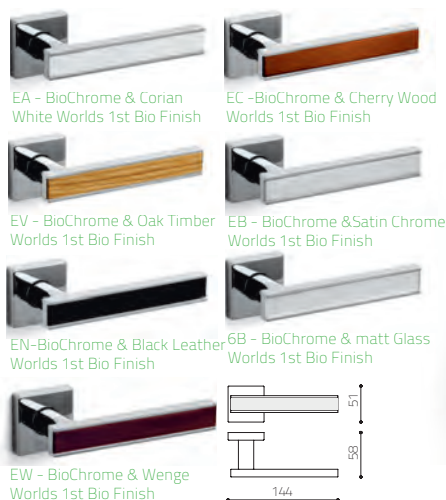
**Diana** - M206S1  
Studio Olivari - 2007



**Blade** - M213S1  
Peter Marino - 2008







**Edge - M212S1**  
Peter Marino - 2008



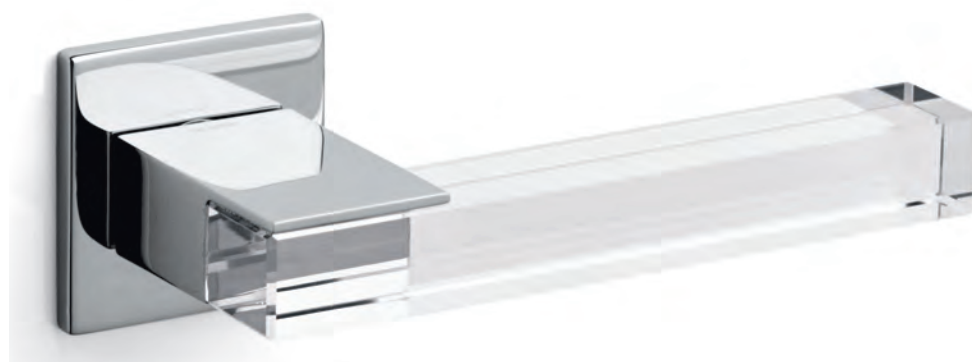
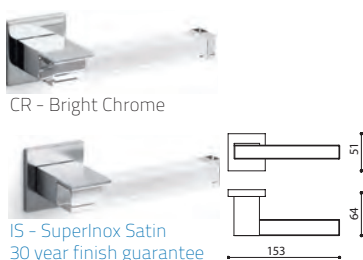
Also available in SuperInox Satin with choice of inserts. IS comes with a 30 year finish guarantee

The M207 is suitable for domestic use on all 8mm open hubbed locks and latches.

**Total - M207S1**  
Rodolfo Dordoni 2007



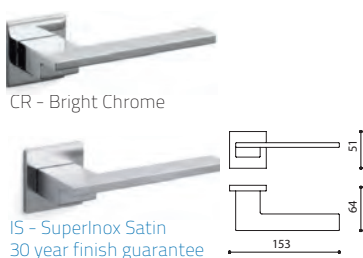
**Ice Cube - M223S1**  
Dominique Perrault 2010



Photographed on 5mm low profile rose. See page 5 for more details.



**Living - M222S1**  
Dominique Perrault 2010



Photographed on 5mm low profile rose. See page 5 for more details.



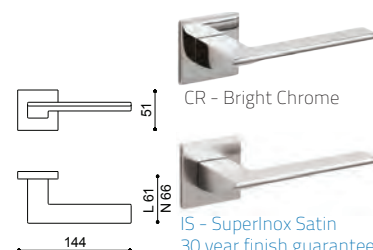
## Square - square rose, square lever

**Trend - M228S1**  
Studio Olivari 2012

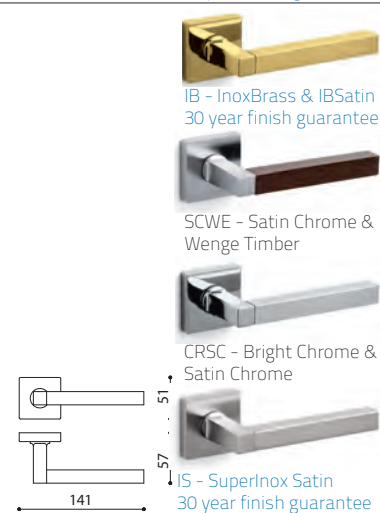
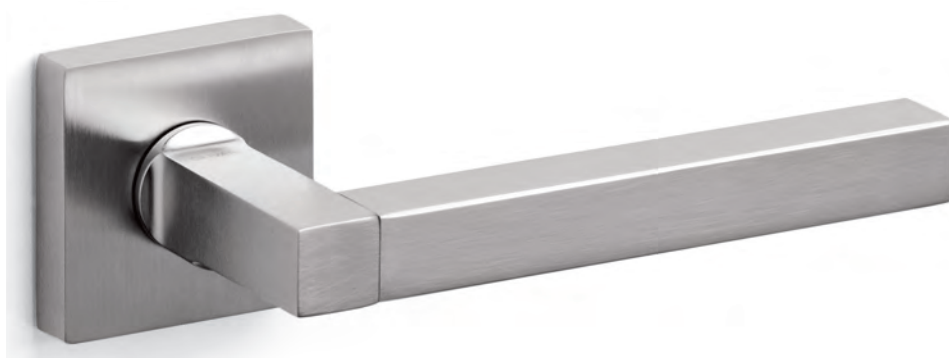
**NEW**



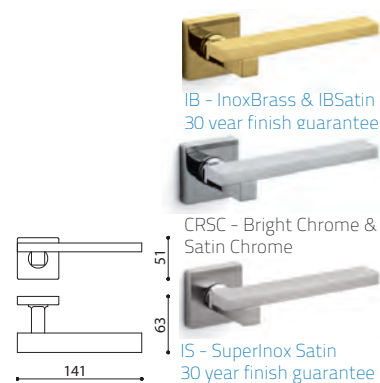
Photographed on 5mm low profile rose. See page 5 for more details.



**Time Q - M192S1**  
Alessandro Mendini 2006



**Space Q - M193S1**  
Alessandro Mendini 2006

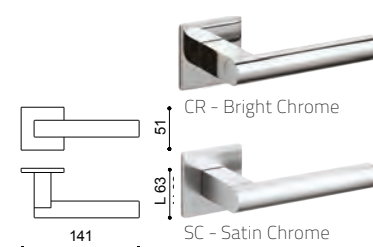


**Euclide Q - M229S1**  
Nicola Novelletto 2012

**NEW**



Photographed on 5mm low profile rose. See page 5 for more details.







EMB - Electro Matt Black



IB - SuperInox Brass  
30 year finish guarantee



CR - Bright Chrome



IS - SuperInox Satin  
30 year finish guarantee

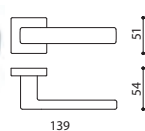
**Planet Q - M195S1**  
Luca Casini 2006



IB - InoxBrass & IBSatin  
30 year finish guarantee



CRSC - Bright Chrome &  
Satin Chrome



**Planet Q - M195S1**  
Luca Casini 2006



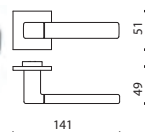
Photographed on 5mm low profile rose. See page 5 for more details.



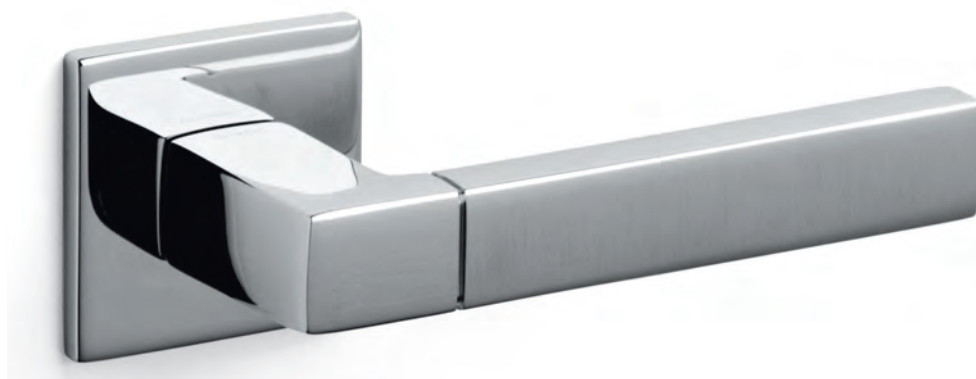
IB - InoxBrass & IBSatin  
30 year finish guarantee



CRSC - Bright Chrome &  
Satin Chrome



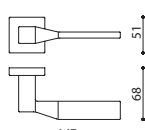
**Planet Q - M195S1**  
Luca Casini 2006



BIC - BioChrome Bright



SC - Satin Chrome



**Adamant - M216S1**  
Patricia Urquiola 2008



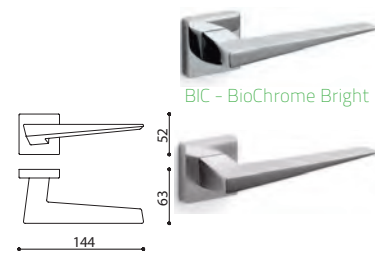
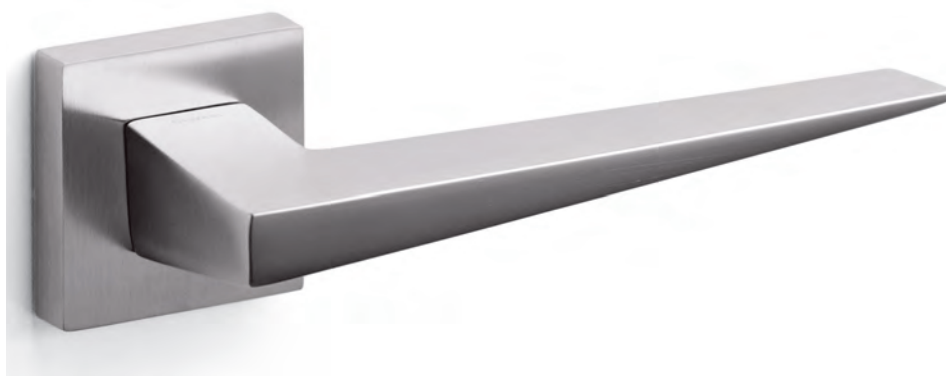


Square – square rose, square lever

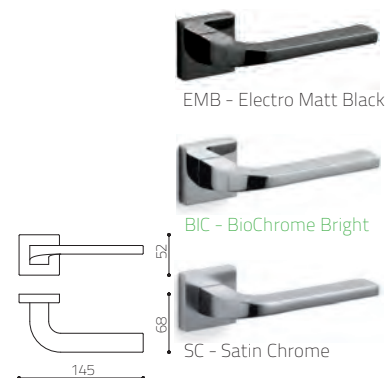
**Denver** - M218S1  
Daniel Libeskind 2009



**Sky** - M214S1  
Claudio Bellini 2008

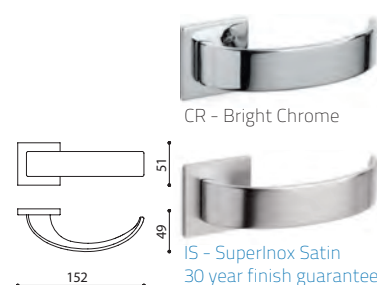


**Lesmo** - M211S1  
Studio Olivari 2008



**Arc** - M225S1  
Rodolfo Dordoni 2010

NEW



Photographed on 5mm low profile rose. See page 5 for more details.

For More Information - Ph: 1300 369 395 eMail: [Info@BellevueImports.com.au](mailto:Info@BellevueImports.com.au) - Web: [www.BellevueImports.com.au](http://www.BellevueImports.com.au)





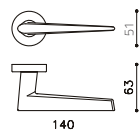
**Nina - M234R1**  
Daniel Libeskind 2013



CR - Bright Chrome



IS - SuperInox Satin  
30 year finish guarantee



EMB - Electro Matt Black



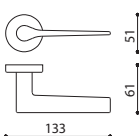
IB - SuperInox Brass  
30 year finish guarantee



CR - Bright Chrome



IS - SuperInox Satin  
30 year finish guarantee



**Lama - M107R1**  
Gio Ponti 1954



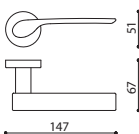
EMB - Electro Matt Black



BIC - BioChrome



SC - Satin Chrome



**Ala - M215R1**  
Massimo Iosa Ghini 2009



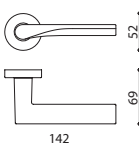
EMB - Electro Matt Black



BIC - BioChrome



SC - Satin Chrome

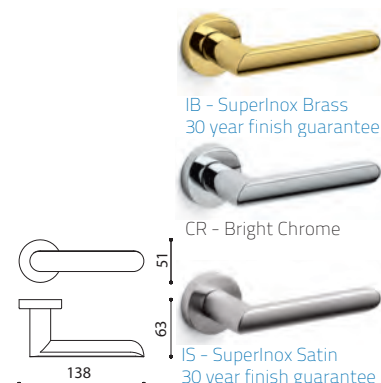


**Fin - M217R1**  
Toyo Ito 2009

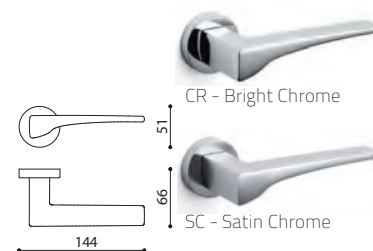


## Round Square – round rose, square lever

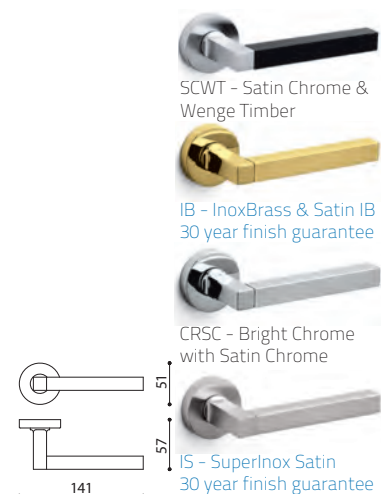
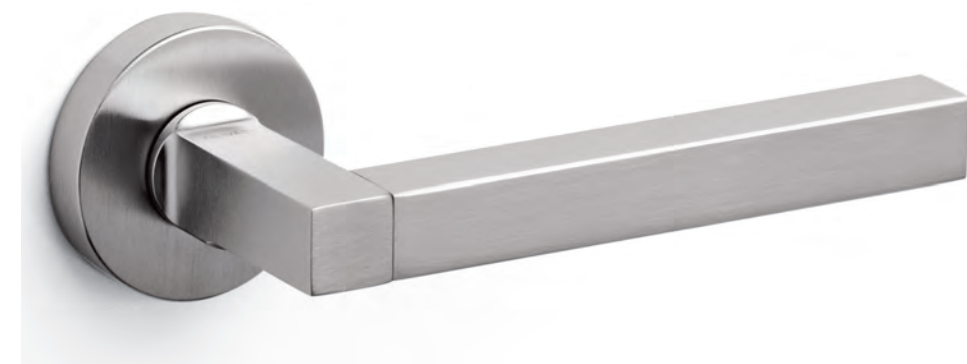
**Laser** - M176R1  
Richard Sapper 1998



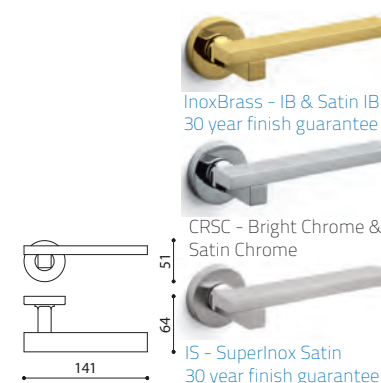
**Madison** - M196R1  
Luca Casini 2005



**Time** - M192R1  
Alessandro Mendini 2004



**Space** - M193R1  
Alessandro Mendini 2004





**Selene - M194R1**  
Massimo Iosa Ghini 2005



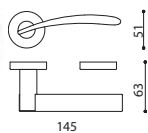
IB - SuperInox Brass  
30 year finish guarantee



CRSC - Bright Chrome  
with Satin Chrome



CR - Bright Chrome



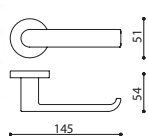
**Beta - M221R1**  
Joe Colombo 2010



CR - Bright Chrome



IS - SuperInox Satin  
30 year finish guarantee



Photographed on 5mm low profile rose. See page 5 for more details.

**Link - M200R1**  
Piero Lissoni 2006



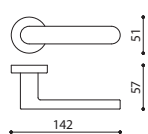
EMB - Electro Matt Black



BIC - BioChrome Bright



IS - SuperInox Satin  
30 year finish guarantee



**Logo - M197R1**  
James Irvine 2006



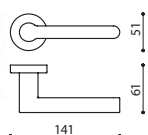
EMB - Electro Matt Black



BIC - BioChrome Bright



IS - SuperInox Satin  
30 year finish guarantee





Round – round rose, round lever

### Alexandra - M150R1

F.A. Porsche 1989



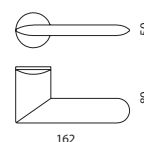
The M150 is suitable for domestic use on all 8mm open hubbed locks and latches.



EMB - Electro Matt Black



CR - Bright Chrome



IS - SuperInox Satin  
30 year finish guarantee

### Planet - M195R1

Luca Casini 2005



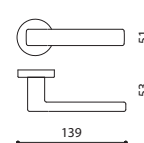
EMB - Electro Matt Black



IB - SuperInox Brass  
30 year finish guarantee



CR - Bright Chrome



IS - SuperInox Satin  
30 year finish guarantee

### Planet Low - M195LR1

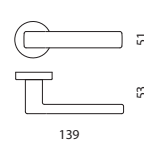
Luca Casini 2005



EMB - Electro Matt Black



CR - Bright Chrome

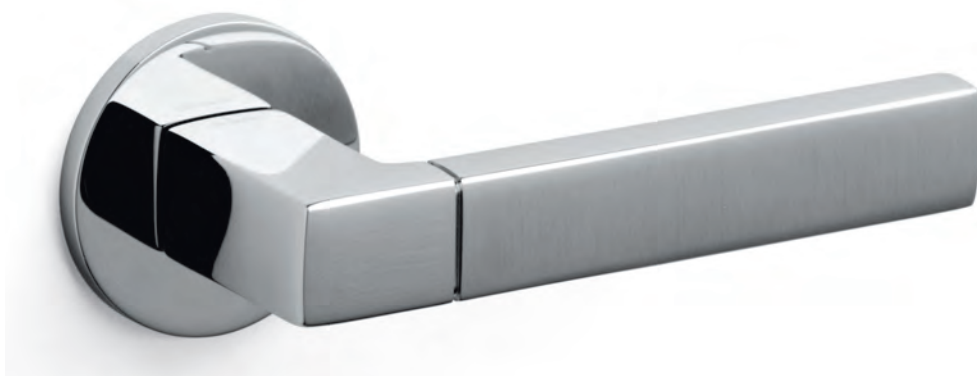


IS - SuperInox Satin  
30 year finish guarantee

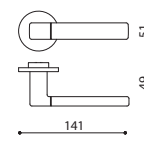
Photographed on 5mm low profile rose. See page 5 for more details.

### Planet dual finish - M195R1

Luca Casini 2005



IB - Inox Brass / IB Satin  
30 year finish guarantee



CRSC - Bright Chrome /  
Satin Chrome

Photographed on 5mm low profile rose. See page 5 for more details.



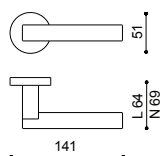
**Euclide - M229R1**  
Nicola Novelletto 2012



CR - Bright Chrome



SC - Satin Chrome



**Stilo - M190R1**  
Enzo Mari 2003



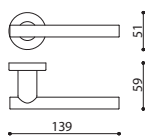
IB - SuperInox Brass  
30 year finish guarantee



CR - Bright Chrome



IS - SuperInox Satin  
30 year finish guarantee



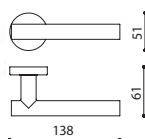
**Beijing - M208R1**  
Steven Holl 2008



BIC - BioChrome Bright



IS - SuperInox Satin  
30 year finish guarantee



**Sibilla - M154R1**  
Vico Magistretti 1992



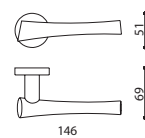
IB - SuperInox Brass  
30 year finish guarantee



CR - Bright Chrome



SC - Satin Chrome





Round – round rose, round lever

**Sector** - M186R1  
Penta Associati 2002



**Aurelia** - M185R1  
Penta Associati 2002

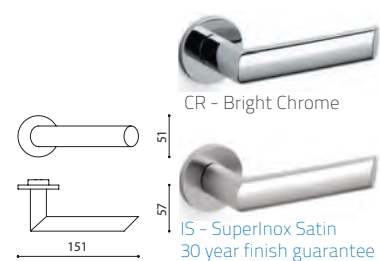


**Moon** - M226R1  
Shigeru Ban 2010

**NEW**



Photographed on 5mm low profile rose. See page 5 for more details.



**Nirvana** - M173R1  
Massimo Iosa Ghini 1997





**Serenella - M130R1**  
Studio Olivari 2009



CR - Bright Chrome & Satin chrome



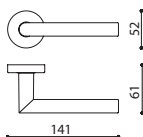
IB - SuperInox Brass  
30 year finish guarantee



CR - Bright Chrome



IS - SuperInox Satin  
30 year finish guarantee



**Raffaella - M128R1**  
Studio Olivari 1975



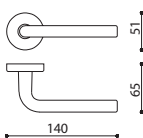
IB - SuperInox Brass  
30 year finish guarantee



CR - Bright Chrome



IS - SuperInox Satin  
30 year finish guarantee



**Tizianella F - M112R1**  
Sergio Asti 1962



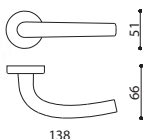
IB - SuperInox Brass  
30 year finish guarantee



CR - Bright Chrome



IS - SuperInox Satin  
30 year finish guarantee



**Garda - M105R1**  
Ignazio Gardella 1951



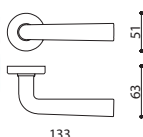
IB - SuperInox Brass  
30 year finish guarantee



CR - Bright Chrome



SC - Satin Chrome

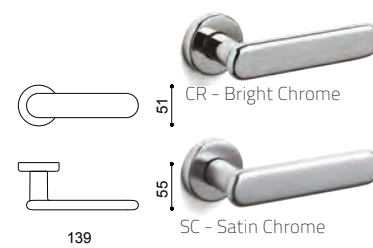




Comfort - round rose, ergonomic lever

**Globe - M227R1**  
Stefano Giovannoni 2012

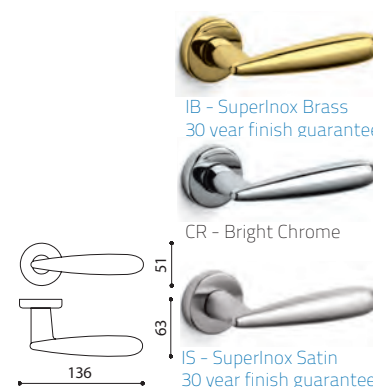
NEW



**Tecno - M182R1**  
Giorgetto Giugiaro 1999



**Futura - M172R1**  
Penta Associati 1997



**Aster - M174R1**  
Penta Associati 1998





**Comet - M183R1**  
Nicola Novelletto 2001



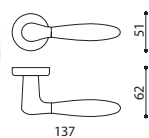
IB/IBS - InoxBrass with Satin IB  
30 year finish guarantee



CRSC - Bright Chrome  
with Satin Chrome



CRIN - Bright Chrome  
with Satin Nickel



CRC6 - Bright Chrome  
with Transparent Glass



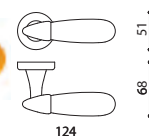
CRC1 - Bright Chrome  
with Blue Glass



CRC2 - Bright Chrome  
with Rose Glass



CRC5 - Bright Chrome  
with Amber Glass



Also available in satin chrome and  
SuperInox brass with coloured glass



**Aurora - M164R1**  
Alessandro Mendini 1994



CXBL - Bright Chrome &  
Ivory leather



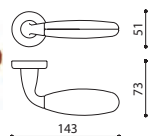
CRXN - Bright Chrome &  
Black leather



CRXF - Bright Chrome &  
Dark Brown leather



CRXE - Bright Chrome &  
Brown leather



Also available in satin chrome and Su-  
perInox Nickel with coloured leather



**Club - M181R1**  
Vico Magistretti 1999



EMB - Electro Matt Black



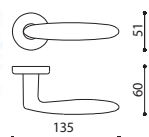
IB - SuperInox Brass  
30 year finish guarantee



CR - Bright Chrome



SC - Satin Chrome



**Flaminia - M159R1**  
Penta Associati 1994



Comfort - round rose, ergonomic lever

Emilia - M167R1  
Penta Associati 1996



Lucy - M231R1  
Patricia Urquiola 2012



Golia - M160R1  
Penta Associati 1994



Perla - M189R1  
Penta Associati 2003





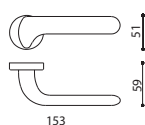
**Polo - M152R1**  
Rodolfo Bonetto 1991



CR - Bright Chrome



SC - Satin Chrome



**Bond - M163R1**  
Andrea Branzi 1994



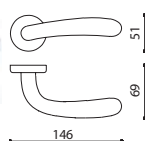
IB - SuperInox Brass  
30 year finish guarantee



CR - Bright Chrome



SC - Satin Chrome



**Novella - M165R1**  
Novelletto, Volonterio 1996



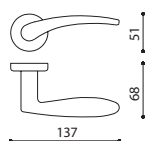
IB - SuperInox Brass  
30 year finish guarantee



CR - Bright Chrome



IS - SuperInox Satin  
30 year finish guarantee



**Agata - M116R1**  
Albini, Helg 1965



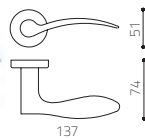
IB - SuperInox Brass  
30 year finish guarantee



CR - Bright Chrome



SC - Satin Chrome



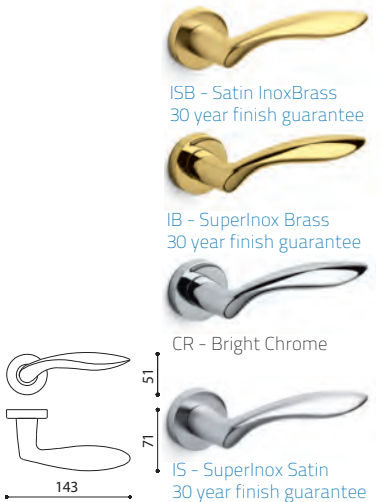


Comfort - round rose, ergonomic lever

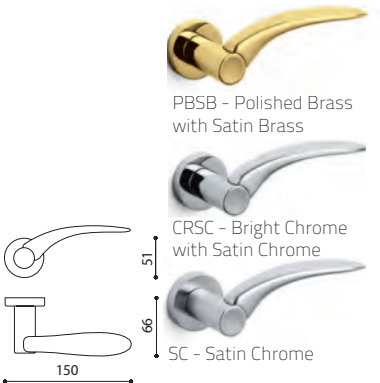
Wind - M187R1  
Penta Associati 2003



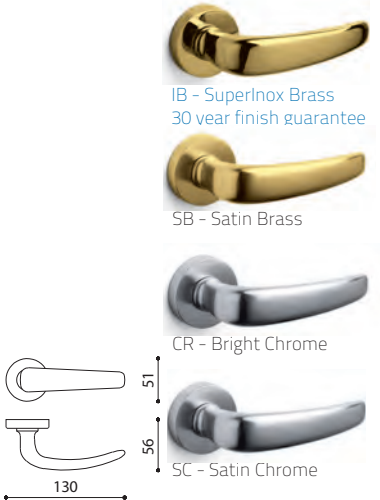
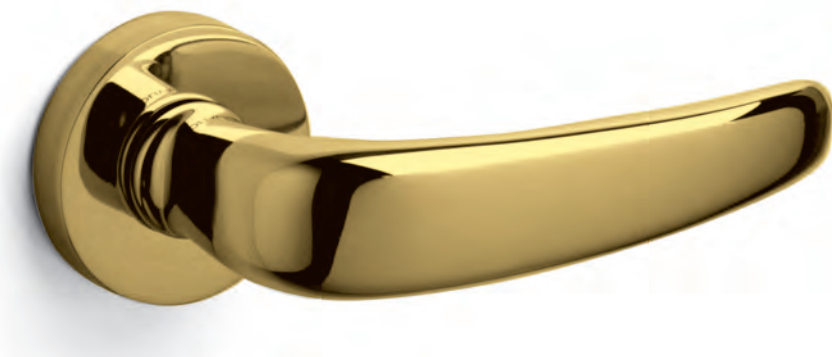
Onda- M175R1  
Nicola Novelletto 1998



Fly - M179R1  
Enrico Marforio 1999



Bolzano - M103R1  
Studio Olivari 1950





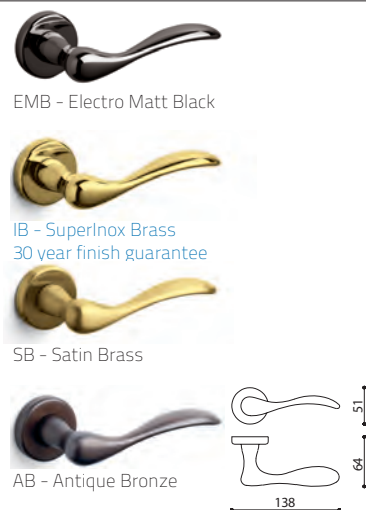
**Gardena - M166R1**  
Penta Associati 1997



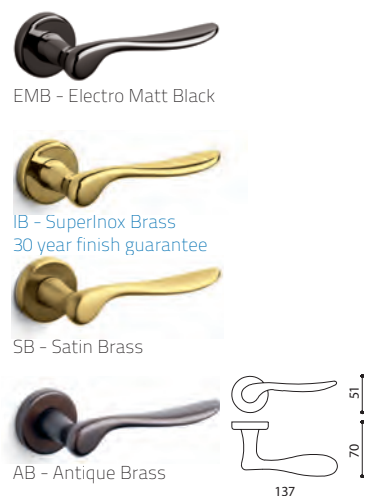
**Icaro - M168R1**  
Paolo Portoghesi 1997



**Siena - M169R1**  
Novelletto, Volonterio 1997



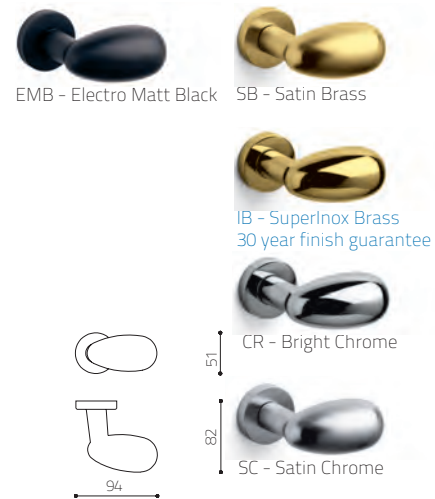
**Orvieto - M170R1**  
Novelletto, Volonterio 1997



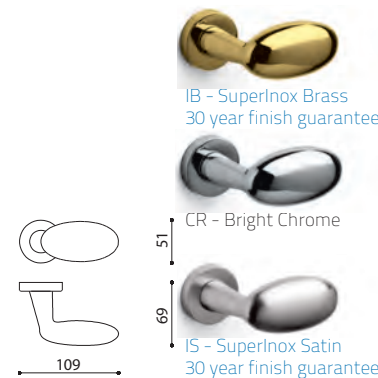


Comfort - round rose, ergonomic lever

Uovo - M108R1  
Studio Olivari 1957



Blindo - M178R1  
Penta Associati 1998



Chiara - M125R1  
Studio Olivari 1975



Clinica 140 - M114R1  
Studio Olivari 1965



**Planet Q** - P195S1  
Studio Olivari



IB CR IS

**Bond** - P163R1  
Andrea Branzi 1994



IB CR SC

**Planet** - P195R1  
Studio Olivari



IBISB CRSC

**Sector** - P186R1  
Penta Associati 2002



IBISB CRSC

Knob - centered

**Aster** - P174R1  
Penta Associati 1998



IBISB CRSC

**Alexandra** - P150R1  
F.A. Porsche 1985



CR IS

**Oscar** - P123R1  
Studio Olivari



IB CR SC

**Link** - P200R1  
Piero Lissoni 2006



IB CR IS

**Victor** - P129R1  
Studio Olivari



CR SC

**Edison** - P146-148R1  
Sergio Mazza, Giuliana Gramigna



IB CR IS

**Roger** - P120R1  
Studio Olivari



CR SC

**Diana** - P206S1  
Studio Olivari - 2006



IB CR IS

P146R1 - Edison Knob 60mm diameter  
P147R1 - Edison Knob 70mm diameter  
P148R1 - Edison Knob 80mm diameter

Finish Guide

- CRSC - chrome satin chrome
- IBISB - inoxbrass inox satin brass
- IB - inox brass
- CR - bright chrome
- IS - inox satin
- Custom Finish for all items
- EMB - electro matt black
- BZ - bronze
- PC - powder coat colours



## Entry Door Pulls - Suitable for swing and sliding doors

### Planet

Studio Olivari

*Ideal for swing or sliding doors*



L195S



L195



*Specification Code + Finish*  
 L195(S) - Planet pull handle single (S on square rose)  
 L195BB(S) - Planet back to back pull set (S on square rose)  
 L 207 x W 47 x Proj 53 x C2C 160mm (on roses)  
 L 182 x W 21 x Proj 44 x C2C 160mm  
 Suitable for timber & aluminium door (fixings included)

#### Finish Guide

- CRSC - chrome satin chrome
- IBISB - inoxbrass inox satin brass
- IB - inox brass
- CR - bright chrome
- S - inox satin

### Time/Time Q

Alessandro Mendini



L192R



L192S



L183R

*Specification Code + Finish*  
 L192R - Time pull handle single  
 L192RBB - Time back to back pull handle set  
 L 198 x W 38 x Proj 54 x C2C 160mm (on round roses)

L192S - Time pull handle single  
 L192SBB - Time back to back pull handle set  
 L 207 x W 47 x Proj 57 x C2C 160mm (on square roses)  
 Suitable for timber & aluminium doors (fixings included)

■ CRSC - chrome satin chrome

### Comet

Nicola Novelletto

*Specification Code + Finish*  
 L183R - Comet pull handle single  
 L183RBB - Comet back to back pull handle set  
 L 198 x W 38 x Proj 59 x C2C 160mm  
 Suitable for timber & aluminium doors (fixings included)

## Diana

Studio Olivari



L206S



L207S



L206



L207

### Specification Code + Finish

L206(S) - Diana pull handle single

L206(S)BB - Diana back to back pull handle set

L 347x W 47 x Proj 61 x C2C 300mm (on square roses)

L324 x W 24 x Proj 51 x C2C 300mm

L207(S) - Diana pull handle single

L207(S)BB - Diana back to back pull handle set

L 347x W 92 x Proj 61 x C2C 300mm (on square roses)

L324 x W 80 x Proj 51 x C2C 300mm

Suitable for timber & aluminium doors (fixings included)

■ CR - bright chrome

■ IS - inox satin

## Link

Piero Lissoni



L199R



L200R



L199



L200

### Specification Code + Finish

L199(R) - Link pull handle single

L199(R)BB - Link back to back pull handle set

L 347x W 47 x Proj 64 x C2C 300mm (on round roses)

L325 x W 25 x Proj 55 x C2C 300mm

L200(R) - Link pull handle single

L200(R)BB - Link back to back pull handle set

L 347x W 114 x Proj 64 x C2C 300mm (on round roses)

L325 x W 103 x Proj 55 x C2C 300mm

Suitable for timber & aluminium doors (fixings included)

■ CR - bright chrome

■ IS - inox satin



## Entry Door Pulls - Suitable for swing and sliding doors

### Stilo

Enzo Mari



#### Specification Code + Finish

L189 - Stilo pull handle single  
L189BB - Stilo back to back pull handle set  
L 245 x W 24 x Proj 59 x C2C 135mm

L190M - Stilo pull handle single  
L190MBB - Stilo back to back pull handle set  
L 338 x W 30 x Proj 64 x C2C 200mm

L190L - Stilo pull handle single  
L190LBB - Stilo back to back pull handle set  
L 445 x W 36 x Proj 67 x C2C 285mm  
Suitable for timber & aluminium doors (fixings included)

■ CR - bright chrome  
■ IS - inox satin

#### Specification Code + Finish

L191M - Stilo Off Set pull handle single  
L191MBB - Stilo back to back pull handle set  
L 338 x W 52 x Proj 64 x C2C 200mm

L191L - Stilo Off Set pull handle single  
L191LBB - Stilo back to back pull handle set  
L 445 x W 57 x Proj 67 x C2C 285mm  
Suitable for timber & aluminium doors (fixings included)

### Aster

Penta Associati



#### Specification Code + Finish

L173R - Stilo pull handle single  
L173RBB - Stilo back to back pull handle set  
L 160 x W 38 x Proj 61 x C2C 198mm

L174R - Stilo pull handle single  
L174RBB - Stilo back to back pull handle set  
L 297 x W 47 x Proj 65 x C2C 250mm

L175R - Stilo Off Set pull handle single  
L175RBB - Stilo back to back pull handle set  
L 297 x W 47 x Proj 65 x C2C 250mm  
Suitable for timber & aluminium doors (fixings included)

■ CRSC - chrome satin chrome  
■ IBISB - inoxbrass inox satin brass

## Bios

Studio Olivari



L204S

L205S

L204

L205

**Specification Code + Finish**  
 L205(S) - Bios pull handle single  
 L205(S)BB - Bios back to back pull handle set  
 L 431x W 47 x Proj 72 x C2C 285mm (on square roses)  
 L 431 x W 27 x Proj 55 x C2C 285mm

L204(S) - Bios pull handle single  
 L204(S)BB - Bios back to back pull handle set  
 L 315 W 47 x Proj 69 x C2C 200mm (on square roses)  
 L 315 x W 23 x Proj 59 x C2C 200mm  
 Suitable for timber & aluminium doors (fixings included)

■ CR - bright chrome  
 ■ IS - inox satin

## Alexandra

F.A. Porsche



L150

L151

**Specification Code + Finish**  
 L150 - Alexandra pull handle single  
 L150BB - Alexandra back to back pull handle set  
 L 273x W 35 x Proj 65 x C2C 250mm

L151 - Alexandra pull handle single  
 L151BB - Alexandra back to back pull handle set  
 L 273x W 68 x Proj 65 x C2C 250mm  
 Suitable for timber & aluminium doors (fixings included)

■ CR - bright chrome  
 ■ IS - inox satin



## Edison

Sergio Mazza, Giuliana Gramigna



L146R



L147R

### Specification Code + Finish

L146R - Edison pull handle single  
L146RBB - Edison back to back pull handle set  
L 247x W 47 x Proj 80 x C2C 200mm

L147R - Edison off set pull handle single  
L147RBB - Edison off set back to back pull handle set  
L 247x W 47 x Proj 82 x C2C 200mm  
Suitable for timber & aluminium doors (fixings included)

■ CR - bright chrome  
■ IS - inox satin  
■ IB - inoxbrass

## Icaro

Paolo Portoghesi



L168R

## Bond

Andrea Branzi



L163

### Specification Code + Finish

L168R - Icaro off set pull handle single  
L168RBB - Icaro off set back to back pull handle set  
L 252x W 51 x Proj 65 x C2C 200mm  
Suitable for timber & aluminium doors (fixings included)

■ IB - inoxbrass

### Specification Code + Finish

L163R - Bond off set pull handle single  
L163RBB - Bond off set back to back pull handle set  
L 214x W 47 x Proj 70 x C2C 167mm  
Suitable for timber & aluminium doors (fixings included)

■ IB - inox brass  
■ CR - bright chrome  
■ SC - satin chrome

## Olivari Snibs and Emergency Releases – Suitable for all door types, internal or external.

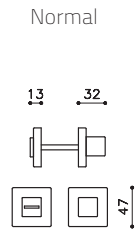
### Cubo by Studio Olivari

[Order Code + Finish](#)

H136S – Snib Only

H136V6 – Snib & eRelease

H136F6 – Snib & Indicating eRelease



Snib



eRelease



Indicating eRelease

### Space Q by Studio Olivari

[Order Code + Finish](#)

H202S – Snib Only

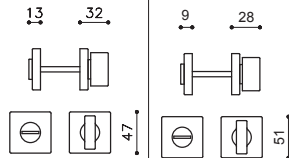
H202V6 – Snib & eRelease

H202F6 – Snib & Indicating eRelease

[Low Profile:](#)

H202LV6 – Snib & eRelease

H202LF6 – Snib & Indicating eRelease



Snib



eRelease



Indicating eRelease

### Verona by Studio Olivari

[Order Code + Finish](#)

H107S – Snib Only

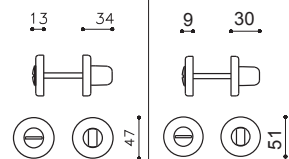
H107V6 – Snib & eRelease

H107F6 – Snib & Indicating eRelease

[Low Profile:](#)

H107LV6 – Snib & eRelease

H107LF6 – Snib & Indicating eRelease



Snib



eRelease



Indicating eRelease

### Link by Studio Olivari

[Order Code + Finish](#)

H200S – Snib Only

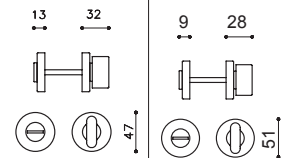
H200V6 – Snib & eRelease

H200F6 – Snib & Indicating eRelease

[Low Profile:](#)

H200LV6 – Snib & eRelease

H200LF6 – Snib & Indicating eRelease



Snib



eRelease



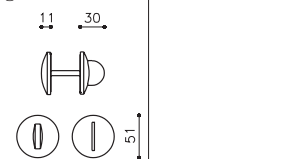
Indicating eRelease

### Alexandra by F.A. Porsche / P. Portoghesi

[Order Code + Finish](#)

H150S – Snib Only

H150V6 – Snib & eRelease



Snib



eRelease

### Finish Guide

- CR – bright chrome
- BIC – BioChrome
- IB – inox brass
- SC – satin chrome
- IS – inox satin
- EMB – electro matt black
- BZ – bronze
- PC – powder coat colours



Olivari BIPR – Matching Privacy Latch Button on round or square rose

SuperInox finished hardware comes with a 30 year anti-tarnish anti-corrosion guarantee: It won't pit, rust, tarnish or fade, making it ideal for all sea-air environments. BioChrome is the worlds 1st bio-friendly door hardware finish.



## Backplates - used for Timber, Glass and Aluminium Framed Doors



**1226 Olivari Backplate**  
Size: 240 x 42 x 10mm  
Suitability: Timber Doors



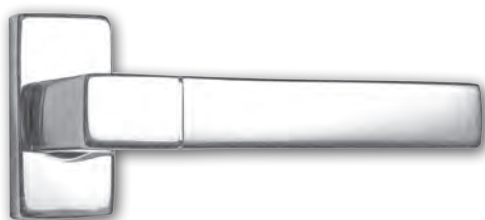
**1224 (P) Olivari Backplate**  
Size: 234 x 40 x 10mm  
Suitability: Timber Doors



**1227 (NP) Narrow Backplate**  
Size: 185 x 25 x 12mm  
Suitability: Timber / Aluminium Doors



**1228 (EP) Narrow Backplate**  
Size: 220 x 25 x 12mm  
Suitability: Timber / Aluminium Doors



**NR Narrow Round End Rose**  
Size: 60 x 30 x 10mm  
Suitability: Timber / Aluminium Doors



**NS Narrow Square End Rose**  
Size: 60 x 30 x 10mm  
Suitability: Timber / Aluminium Doors

An important fact to keep in mind...Olivari backplates and narrow style roses are fully sprung for superior handle bounce back, they won't droop over time.

## Cylinder Escutcheons - Used on Timber, Glass and Aluminium Framed Doors



**1192E** - 51 x 51 x 10mm



**11920** - 51 x 51 x 10mm



**1197E** - 60 x 30 x 10mm



**11970** - 60 x 30 x 10mm



**1191E** - 51 Diam x 10mm  
**1191LE** - 51 Diam x 5mm



**11920** - 51 Diam x 10mm



**1155E** - 60 x 30 x 10mm



**11550** - 60 x 30 x 10mm



**1177E** - 50 Diam x 11mm



**11770** - 50 Diam x 11mm

### Finish Guide

- CR - bright chrome
- BIC - BioChrome
- IB - inox brass
- SC - satin chrome
- IS - inox satin
- EMB - electro matt black
- BZ - bronze
- PC - powder coat colours

## Magnetic Door Stops – Suitable for all door types, internal or external.



**BMD045** – SC, CR  
H75xD23, Base D50mm



**BMD047** – SC, CR  
H:80xD10, Base D45mm



**BMD048** – SC, CR  
H:38xW:50xD50mm



**Olivari B106M Victor**  
Finish: CR, IS, IB



**Olivari B136M Cubo**  
Finish: CR, IS, IB  
Size: 34 x 32 x 38mm

## Floor Mounted Door Stops – Suitable for all door types, internal or external.



**Olivari B101 Sector**  
CR, IS, IB  
H33 x D:31 x Base 20mm



**Olivari B102 Raffaella**  
CR, IS, IB  
H32 x D:31mm



**Olivari B103 Gardena**  
IB, AB, SB, CR  
H33 x D:31mm



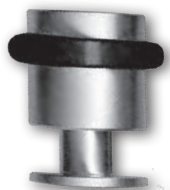
**Olivari B104 Siena**  
AB, SB, PB, CR  
H:32 x D31 x Base 25mm



**60130**  
CR, SC, BR, SN, BZ  
45 x 30mm



**BD 40**  
SS, SSP  
50 x 40mm



**KU** – SS  
**KU20**: 20 x 34mm  
**KU35**: 35 x 50mm



**KU 80** – SS  
Size A: 34 x 34 x 50mm  
Size B: 19 x 19 x 35mm



**70135**  
CRBL, SCBL  
30 x 30 x 30mm



**70136**  
CRBL, SCBL  
35 x 35 x 15mm



**Olivari B106N Victor**  
Finish: CR, IS, IB



**Olivari B136N Cubo**  
Finish: CR, IS, IB  
Size: 34 x 32 x 38mm

## Wall Mounted Door Stops – Suitable for all door types, internal or external.



**B121R** or **B123R**  
BR, SC, CR, IB  
**B123R**: 25 x 70mm  
**B121R**: 25 x 28mm



**B13002** – SC, CR – 75 x 19mm



**B3711** – SS, PSS – 58 x 22x 22mm



**KU 50** or **40** – SS, SSP  
**KU50**: 125 x 25mm  
**KU40**: 95 x 25mm

## Finger Pulls – Recessed in the edge of a sliding door for when it's fully recessed into cavity.



**D126** – IS, CR, IB, BZ – Di 29mm



A



B

Art:	60587A & B	
Size	Length	Height
	30mm	40mm
Finish	Chrome, Satin Nickel, Brass	



Art:	S1592	
Size	Length	Height
	23mm	52mm
Finish	Chrome, Matt Nickel	



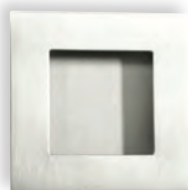
## Flush Pull & Bi Fold Range - Suitable for all sliding doors, concealed fixings, internal or external.



Art:	S2152	
Size	Length	Height
A	76mm	76mm
B	56mm	56mm
Finish	Chrome, Satin Nickel	



Art:	Z9300	
Size	Length	Height
B	75mm	75mm
Finish	Chrome, Satin Nickel	



Art:	301156	
Size	Length	Height
	49mm	50mm
Finish	Chrome, Satin Nickel	

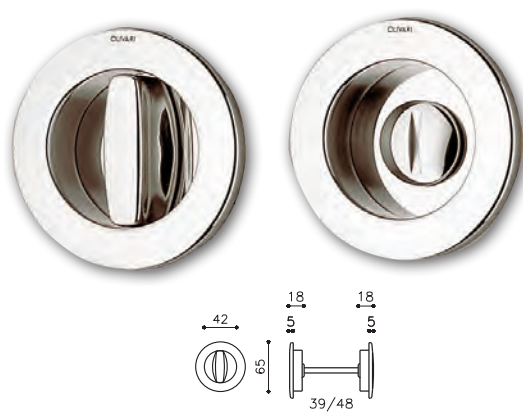


Art:	Z9303	
Size	Length	Height
A	118mm	59mm
B	80mm	43mm
Finish	Chrome, Satin Nickel	

## Olivari Giotto flush privacy pulls are suitable for timber or aluminium framed doors

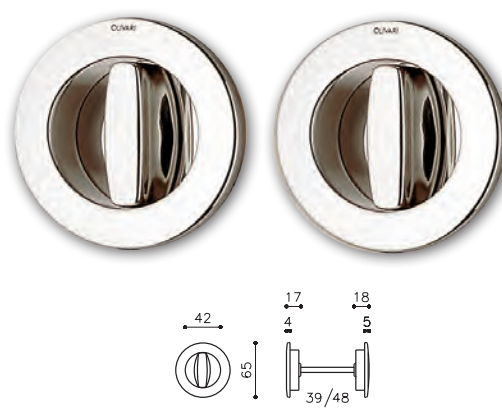
### D122 Giotto - IS, CR, IB, PC, EMB

Suitable for 38mm thick doors (inc BL015 sliding door latch)



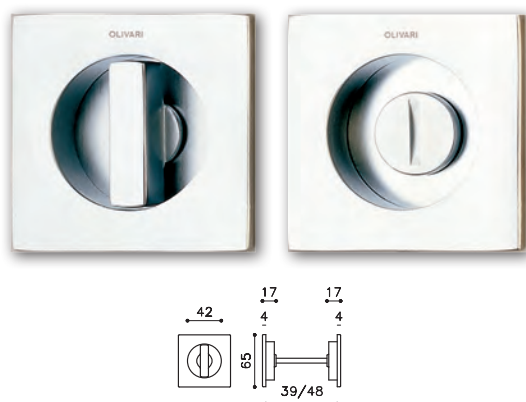
### D123 Giotto - IS, CR, IB, PC, EMB

Suitable for 38mm thick doors (inc BL015 sliding door latch)



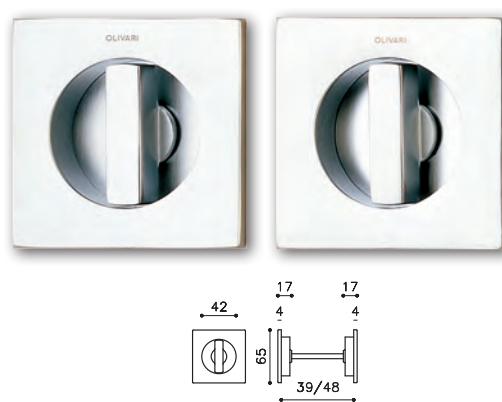
### D127 Giotto - IS, CR, IB, PC, EMB

Suitable for 38mm thick doors (inc BL015 sliding door latch)



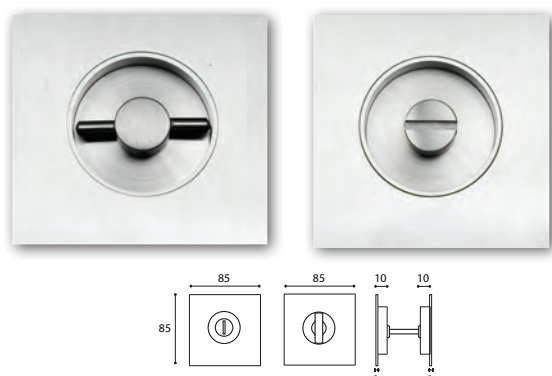
### D128 Giotto - IS, CR, IB, PC, EMB

Suitable for 38mm thick doors (inc BL015 sliding door latch)



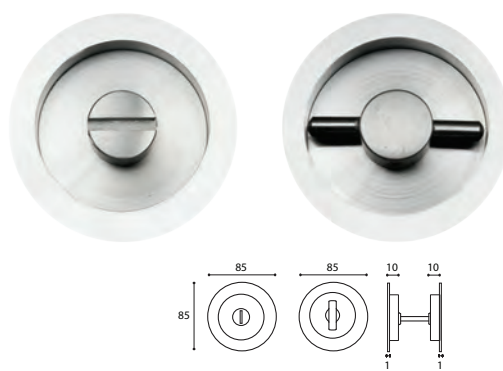
### K14250L - SS, PS

Suitable for 34mm thick doors (inc BL015 sliding door latch)



### K13250L - SS, PS

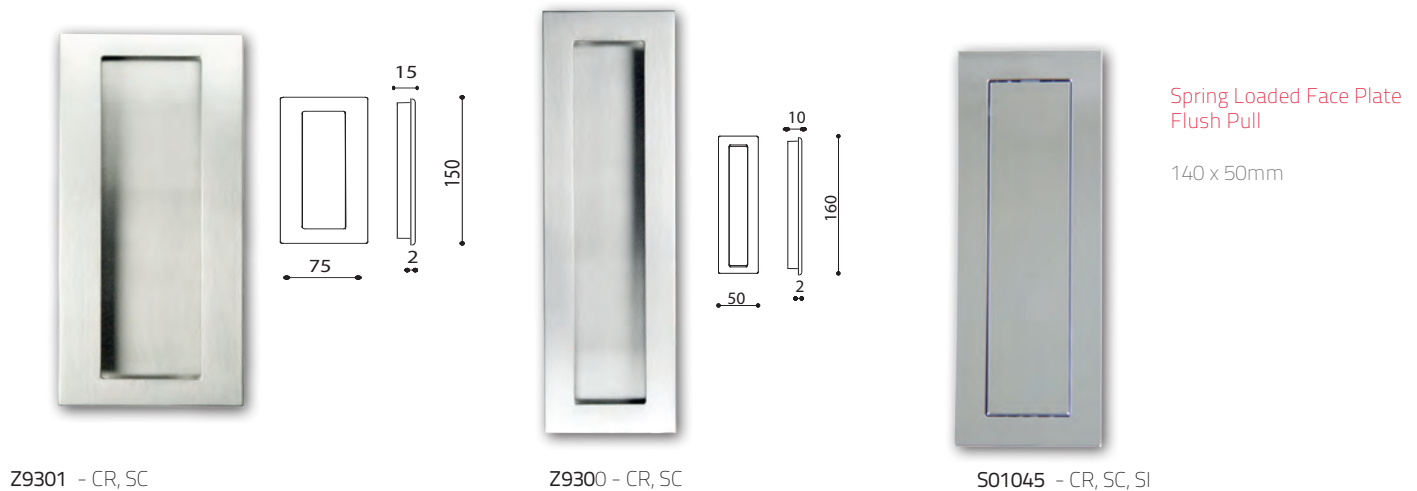
Suitable for 34mm thick doors (inc BL015 sliding door latch)



Olivari D109 & D111 flush pulls are Suitable for timber or aluminium framed doors



Ideally priced for large or small projects: call for project pricing



Round Flush Pull Range – Suitable for all timber sliding doors, concealed fixings, internal or external





## MAGNETIC LATCHES – Clean Doors and Door Jambs

The new patented magnetic tubular passage latch by Bonaiti of Italy represents the next leap forward in door latching hardware. Due to a lack of real and cost effective alternatives to traditional tubular latching mechanisms, issues such as aesthetics (protruding latch tongues & striker plates), latch noise (when the tongue hits the door jamb), the creation of custom and expensive striker plates (due to wide door jambs) and general reliability have never been questioned.

Today Bonaiti of Italy and Bellevue are proud to release to the Australian and New Zealand markets the new magnetic tubular passage latch, which address these, and other, issues associated with traditional tubular latches.

### Aesthetics

With a magnetic latch there is no visible striker plate when the door is closed. As a result you have a clean door & jamb. When the door is open, there is no unsightly latch tongue protruding from the edge of the door – a clean look.

### Locking / Unlocking:

With a magnetic tube latch to open and close the door, all you do is pull the door lever down as you would any other latch.

### Protruding Latch Tongue & Striker Plate:

With a magnetic tube latch, there is no chance of catching clothes or arms on protruding latch tongues & striker plates.

### Pivot Doors:

The magnetic tube latch is ideal for doors that swing in both directions due to the fact that the latch is not handed, this means that it will latch no matter which direction the door swings in. Added to this is the lack of a visible striker plate, traditional solutions require a visible unsightly custom made striker plate to be mounted to both sides of the door jamb. Not with the magnetic latch – you don't see it.

### Noise:

With a magnetic latch, the latching mechanism is completely silent due to it being magnetic. No latch tongue to hit the striker when closing or opening the door

### Wide door jambs:

With a magnetic tube latch, there is no need for wide custom striker plates (due to the angle of the protruding latch tongue rubbing against the timber jamb before it hits the striker). The magnetic tube latch tongue only engages when the magnetism of both the latch and striker meet.

### Reliability:

With a magnetic tube latch, because the tongue engages due to the magnetic attraction to the cup in the striker plate (not due to moving parts), it will for all intents and purposes, never fail.

Compatible with standard Australian, European and Asian door hardware, the magnetic tubular passage latch is the ideal latch for any project where design and quality is fundamental. The clean look of a door and jamb without a visible striker plate speaks volumes.

No Visible Striker Plate



No Protruding Latch Tongue



No Handle



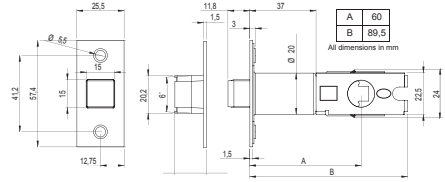
## MAGNETIC LATCHES - Clean Doors and Door Jambs

- No visible striker plate when door is closed
- No visible latch tongue when door is open
- Ideal for a double action pivot door
- Silent tongue action
- Quick & Simple Installation
- Tested to over 400,000 cycles - Total Reliability
- Manufactured in Italy and comes with a 2 Year Manufacturers Guarantee

### BL001 Magnetic Tubular Latch



Suitable for all standard door hardware  
Suitable for 7.65 or 8mm spindles  
Suitable for all timber type doors  
60mm back set hub

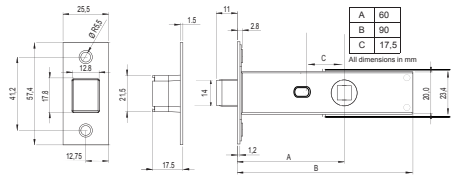


BL001CR - Polished Chrome  
BL001SC - Satin Chrome  
BL001PB - Polished Brass

### BL002 Magnetic Privacy Latch



Privacy button for locking of latch  
Emergency release hole for escape  
Suitable for all standard door hardware  
Includes 7.65 & 8mm split spindles  
Suitable for all timber type doors  
60mm back set hub



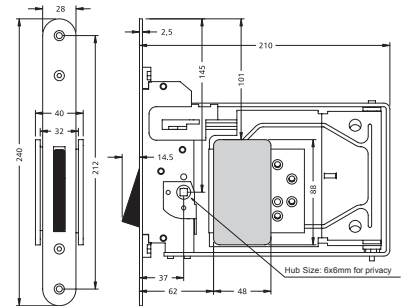
BL002CR - Polished Chrome  
BL002SC - Satin Chrome  
BL002PB - Polished Brass

### BL004 Magnetic Handle Free Latch

### BL005 Magnetic Handle Free Privacy Latch



Standard passage latch version  
Privacy version for locking of latch  
Emergency release for escape  
No visible door hardware or rose  
Suitable for timber or aluminium doors  
Smooth pull and push action



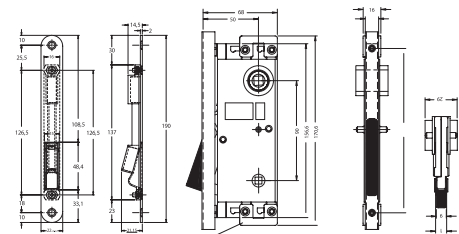
BL004CR or BL005CR - Polished Chrome  
BL004SC or BL005SC - Satin Chrome

### BL006 Magnetic Glass Patch Plate Lock

### BL007 Magnetic Glass Patch Plate Privacy Lock



Patch plate suitable for 8-12mm glass  
Lockable Passage & privacy versions  
available  
Suitable for all standard door hardware  
60mm back set for lever  
Quick & Simple Installation  
No Periodical Greasing Required  
60mm back set hub



BL006CR or BL007CR - Polished Chrome  
BL006SC or BL007SC - Satin Chrome



Olivari by Bellevue - Creators of SuperInox & BioChrome  
Leading The World In Product Design, Quality And Innovation.

*Melopsittacus Undulatus*



*Lucy, designed by Patricia Urquiola, one of the door handles that Olivari has been entirely producing in Italy for over 100 years*

Bellevue Imports Pty Ltd  
954 Glenhuntly Road, Caulfield South Victoria Australia 3162  
Call Us Or Visit Our Web Site For Your Nearest Display Centre.

Phone: 1300 369 395  
Fax: 03 9571 1347

Web: [www.BellevueImports.com.au](http://www.BellevueImports.com.au)  
eMail: [Info@BellevueImports.com.au](mailto:Info@BellevueImports.com.au)

Retail Olivari: Catalogue V13/1  
The catalogue and products may be updated. Registered  
trademarks and patented designs. All rights reserved ©  
Olivari B. s.p.a. & Bellevue Imports P/L